

WENDELIGHTING®

DIVISION OF JACKSEN INTERNATIONAL LTD

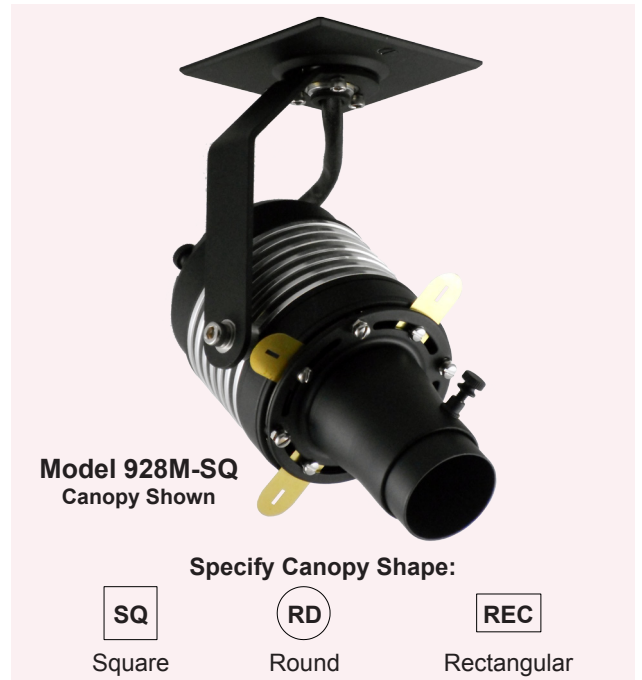
Wenlux® Model 928M
Monopoint
Optical Projector

Wendelighting's Wenlux® Model 928 lighting system provides the designer with a surface mounted optical light shaping projector that delivers a variety of illumination options for fine art and furnishings that can be installed and adjusted with ease.

The Wenlux projector combines an optical system including precision ground lenses and independent locking light mask shutters for a secure, field cuttable, exacting Sharp Focus Light Border. For a Soft Focus Border, Wendel's® optional Fade In® technology utilizes a diffusion system, to easily create a four sided, loosely conforming light, shaped to the area of interest. Variable optics change light spread to highlight subjects of many sizes and distances.

The Wenlux projector incorporates a bright energy-efficient light source, convection cooling and a rigid fastening system securely positioned to ensure optimal performance. A 4" square deep junction box with specific adjustable mud ring is provided (see page 2 for details).

Patent 9458991 B2 - Additional Patents Pending
Wendelighting reserves the right to make changes without notice.



Model 928M-SQ
Canopy Shown

Specify Canopy Shape:



Square



Round



Rectangular

Field Cuttable
Curved Etch
Shutters

Transformer

Model 928M-REC
Canopy Shown

STANDARD SPECIFICATIONS

Applications: Paintings, Sculptures, and Furnishings
Power: 120 VAC
Transformer: Electronic Low Voltage 120 VAC Input - 11.5 VAC Output
Shutters: Excess Field Cut
Objective Lenses: Three 76 FL Lenses
Housing: Aluminum
Specify Color: Nat Aluminum (AL) AL/Black, AL/White
Mounting: Square, Round, or Rectangular Monopoint (Beam, Ceiling, or Wall Mount)
Relamping: Does Not Change Focus
Weight: 2.5 lbs.
Dimmer: Electronic Low Voltage Dimmer Required
Listing: UL / CUL - Damp Location
Accessories:
 - Light Mask Plate Gate for Non-Rectilinear Object
 - Narrow Beam Objective Cone for One 76 FL Lens
 - Standard MR16 1.9" Dia. UV or Color Filter by Others
 - Fade In® Lens

Lamp Options**
(As of Jan. 2018)

Philips® 45 MRC16/IRC/NFL24° ***
 Ushio® JR12V-50W/NFL/FG/IR 25° ***
 Sylvania® 50MR16/IR/NFL25° ***
 Soraa® MR16 LED SM16-07-25D-930-03 ****

For CA Title 24 JA8-2016-E Residential Lighting Requirement
Will not deliver foot candle levels shown below.
Requires Fade In® Accessory *

DIAMETER OF SPOT AND FOOT CANDLES DATA (PHILIPS 45MR16 IR)

| Distance to Object | | 1' | | 2' | | 3' | | 4' | | 5' | | 6' | | 7' | | 8' | | 9' | | 10' | | Spread |
|--------------------|-------------------------------|--------------|------------|--------------|------------|--------------|------------|--------------|------------|--------------|------------|--------------|------------|--------------|------------|--------------|------------|--------------|------------|--------------|------------|-------------------|
| Application | 76 FL Objective Lens Quantity | Size of Spot | Foot Cand. | Size of Spot | Foot Cand. | Size of Spot | Foot Cand. | Size of Spot | Foot Cand. | Size of Spot | Foot Cand. | Size of Spot | Foot Cand. | Size of Spot | Foot Cand. | Size of Spot | Foot Cand. | Size of Spot | Foot Cand. | Size of Spot | Foot Cand. | Near Uniform Area |
| Narrow Beam* | 1 | 3" | 2300 | 6" | 730 | 9" | 360 | 13" | 205 | 16" | 130 | 19" | 90 | 22" | 65 | 26" | 50 | 29" | 38 | 32" | 33 | 16° |
| Medium Beam | 2 | 7" | 1500 | 15" | 490 | 22" | 220 | 30" | 125 | 38" | 73 | 45" | 53 | 53" | 37 | 61" | 29 | 69" | 21 | 76" | 19 | 36° |
| Wide Beam | 3 | 9" | 630 | 19" | 260 | 30" | 105 | 40" | 58 | 50" | 37 | 60" | 24 | 70" | 19 | 80" | 15 | 90" | 12 | 100" | 10 | 46° |
| Very Wide Beam | 4 | 13" | 60 | 27" | 195 | 41" | 73 | 54" | 43 | 69" | 26 | 82" | 18 | 95" | 14 | 109" | 11 | 123" | 9 | 137" | 7 | 60° |

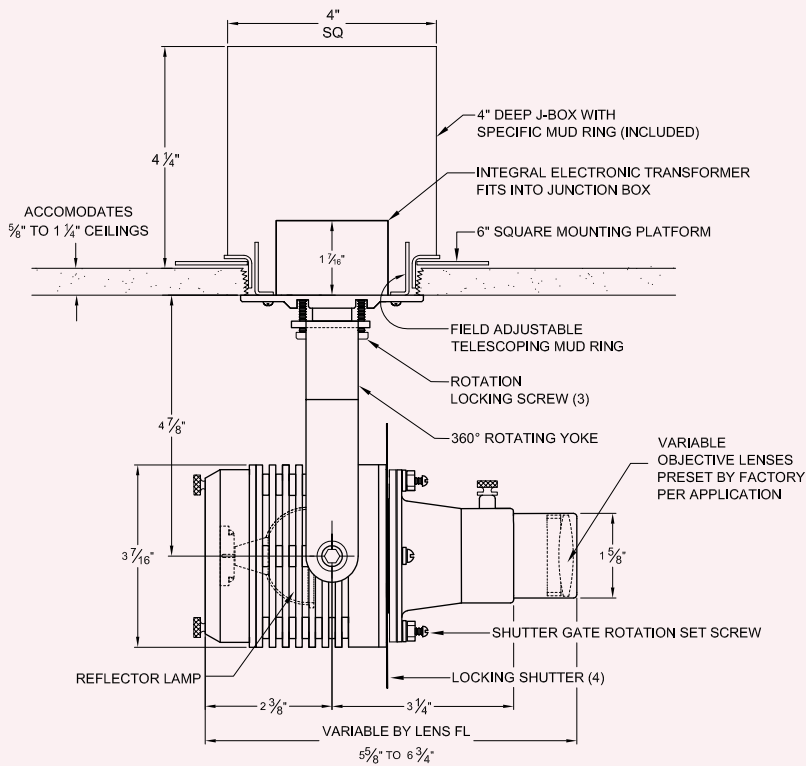
*Accessory Required

**Lamp Options Subject to Availability

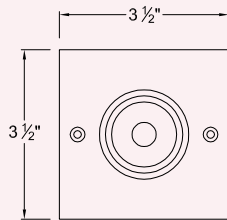
***Not Compliant with CA Title 20
****Limited to Lamps Manufactured Prior to 12/31/17
See wendelighting.com/resources

Wenlux® Model 928M

DIMENSIONS

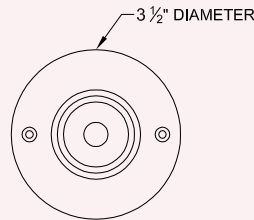


SPECIFY CANOPY SHAPE



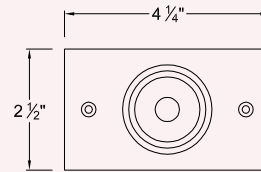
SQ
SQUARE

FITS STANDARD 3" DIAMETER MUD RING OVER 4" SQUARE DEEP J-BOX



RD
ROUND

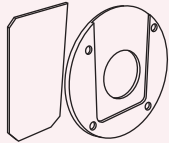
FITS STANDARD 3" DIAMETER MUD RING OVER 4" SQUARE DEEP J-BOX



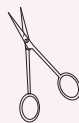
REC
RECTANGULAR

FITS STANDARD 2-1/4" x 3-3/4" SINGLE DEVICE MUD RING OVER 4" SQUARE DEEP J-BOX

ACCESSORIES



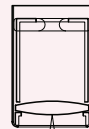
LM
LIGHT MASK
PLATE GATE KIT
FOR NON-RECTILINEAR
OBJECTS



SCR
SCISSORS



76 FL
ADDITIONAL
76FL LENS
FOR
60°



NB16
NARROW BEAM
OBJECTIVE CONE
ASSEMBLY FOR
16°



FI
FADE IN®
SOFTENING LENS



UV
ULTRAVIOLET
BLOCKING
LENS

PATENT 6,612,0761B2, ADDITIONAL PATENTS PENDING

HOW TO SPECIFY

To specify, please visit www.wendelighting.com/worksheets.htm, complete the appropriate projector worksheet and forward the completed worksheet to our staff members, info@wendelighting.com.

The name Wendelighting is registered to Jacksen International Ltd., Monrovia, California. The name encompasses Wendel® and Wenlux® optical projectors as well as other types of Wendel/Wenlux lighting fixtures for both interior and exterior use.



WENDELIGHTING®

DIVISION OF JACKSEN INTERNATIONAL LTD