

WENDELIGHTING®

DIVISION OF JACKSEN INTERNATIONAL LTD

Wendel® 928TL
Track Mount Optical Projector
LED

The Wendel® 928TL Track Mount Framing Projector includes a low profile track adapter with an integral LED driver. White to warm high color rendering LED chips were discriminately selected to enhance art. A shaped light mask framed to art accentuates focus. Precision ground lenses focus upon independently locking light masking shutters for a securely shaped Focused Light Border "FB" (standard). For our proprietary Fade In® Light Border, specify "FI."

The LM Lighting Modules include the track adapter driver, LED chip, proprietary optics and cooling system. Lighting Modules accept the Projector (Adapter Cone) to which variable beam spread Objective Lens Focus Tubes are positioned within to highlight subject of many sizes and distances.

928TL provides rotational adjustment using lockable fastening systems. Dual heat sink technology provides optimum LED cooling. The track adapter includes a locking feature for positive luminaire engagement to track. The luminaire is suitable for use on a track installed to a ceiling, the side of an exposed beam or wall.

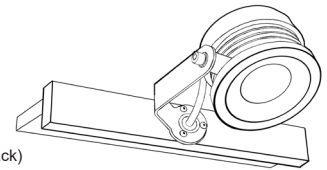
Wendel® 928TL is only listed for use with Stucchi's surface and recessed Onetrack. The track adapter/driver also engages to Nordic Aluminum Global Track Pulse XTSC. The tracks include a two wire data or analog bus link for use when applicable.



Wendelighting reserves the right to make changes without notice.

Power:	120 - 277V VAC Input - 20 Watts
Adapters:	Lighting Module Track Adapter Options include Circuit Dimming Groups to Individual Control
Dimming:	Track Adapter Options Include Phase Control - Digital Control - Wireless Control and 0-10V Control
Tested:	LMAC with 2790 Chip and Primary Optics JA8 Tested - 1500 Lumens @ 500mA - 74 Lumens/Watt
Optics:	Proprietary
Luminaire:	Aluminum
Mounting:	Beam - Ceiling - Wall
Listings:	UL / CUL LISTING - Dry Location - Listing For Use Only with STUCCHI 120V - 3 Circuit-Onetrack UL Models:
Certification:	California Title 24 Residential Lighting JA8 Listing

Inseparable
JA8 Lighting Module



- 9000 - UL - ST - 120 (Surface Track)
- 9000 - UL - R - 120 (Recessed Track)

TRACK MOUNT OPTICAL PROJECTOR OPTIONS

928	TL	LM	LED Chip Options (Chip Values) @ 500mA:	Objective Lens Focus Tube (Beam Spread):	Light Border:	Fixture Color:	Light Control Accessories:
Adapter Cone:	Track Mount	Lighting Module:	2798 2700K 98 CRI 1450 Lumens R9 93	12°	FB (Standard)	BLK Black	SH Extra Shutter (1)
Optical Framing Projector		LMPC (Standard) 3 Circuit Track Adapter - Shared Neutral Forward / Reverse Phase Control Dimmable 1% Use ELV Dimming 120 - 277V In / 500mA Out	3098 (Standard Chip) 3000K 98 CRI 1550 Lumens R9 88	25°	Focused Light Border	WHT White	MK Light Mask Kit (Fade In Required)
		LMDC (Special Order) Individual Dimming Control Data Bus Track Adapter Digitally Addressable Dimming Control Dali® 1 Compatible (Not Dali Certified) Dimmable 1% 120 - 277V In / 500mA Out	2790 (Special Order) 2700K 90 CRI 1650 Lumens R9 54	45°	FI Fade in® Light Border		SC Scissors
		LMAC (Special Order) Analog Bus Track Adapter 0-10 Volt Dimming Control Dimmable 2% 120 - 277V In / 500mA Out	3090 (Special Order) 3000K 90 CRI 1750 Lumens R9 60	60°			UV Ultraviolet Blocking Lens
		LMCC (Special Order) Individual Dimming Control Wireless Bluetooth Track Adapter Casambi® Control Dimmable 1% Casambi® Ecosystem iOS / Android 120 - 277V In / 500mA Out		90°			1F 100 Kelvin Warming Filter 39mm Diameter
		LMXC (Special Order) Individual Dimming Control Wireless Bluetooth Track Adapter Xicato® Control Dimmable 1% Xicato® Ecosystem - BLE Beacon Technology Xicato® Control PC/iOS 120 - 277V In / 500mA Out					

Color Filter Options: Additional 39mm Diameter Dichroic Color Filters Available Through Rosco

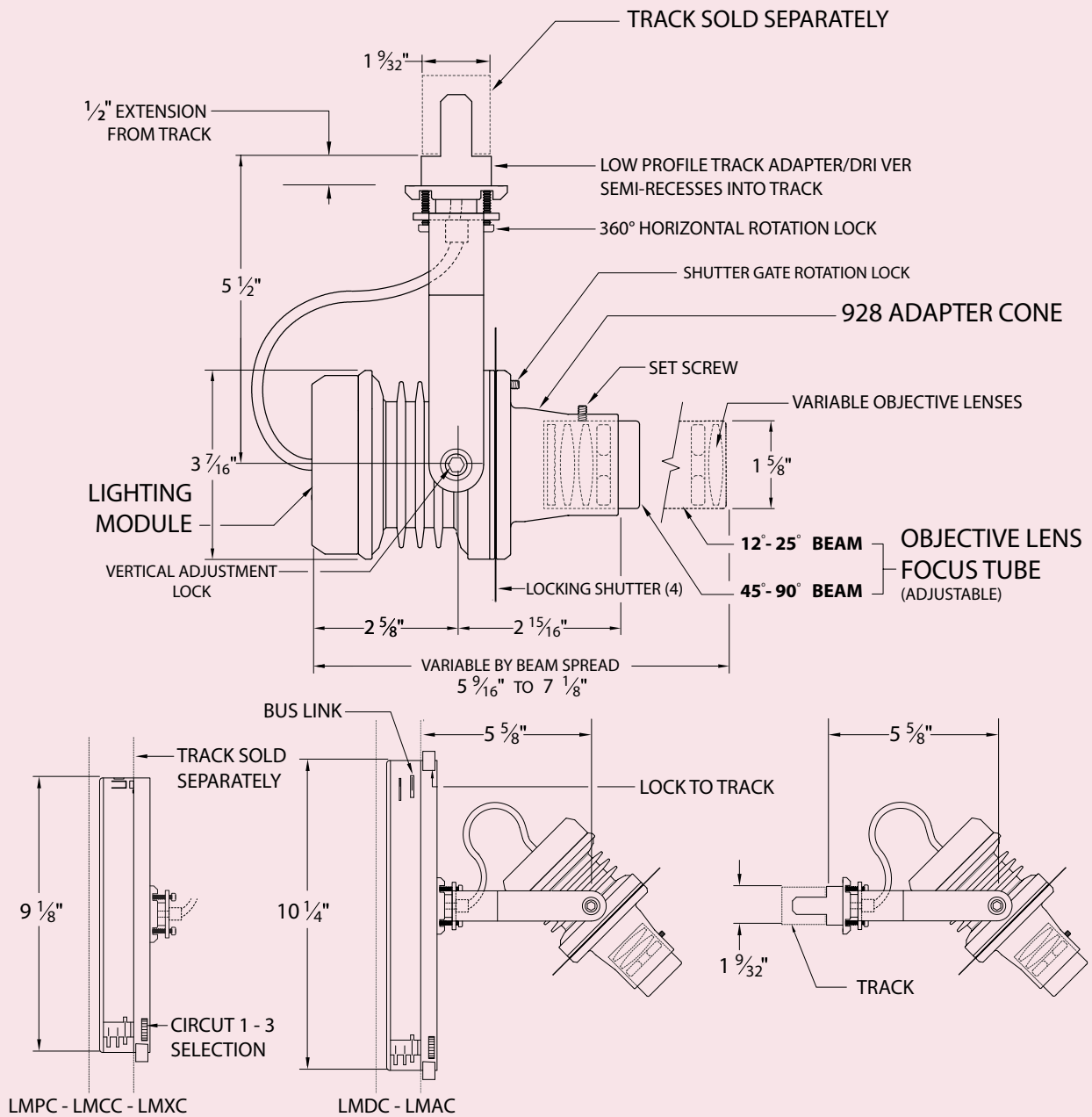
STUCCHI and Onetrack are Registered Trademarks of A.A.G. STUCCHI.
Nordic Aluminum and Global Track Pulse are Registered Trademarks of Nordic Aluminum Lival Group.
Xicato® is a Registered Trademark of Xicato Inc.

Casambi® is a Registered Trademark of Casambi Technologies Oy/Inc.
Dali® is a Registered Trademark of the Digital Illumination Interface Alliance.

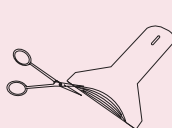
WENDELIGHTING / DIVISION OF JACKSEN INTERNATIONAL LTD. - P.O. BOX 337 - 363 BELL STREET - LOS ALAMOS, CALIFORNIA 93440
(800) 528-0101 Fax (626) 303-0046 www.wendelighting.com e-mail: info@wendelighting.com

Copyright © 2024 Jacksen International. Ltd. All rights reserved

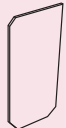
Wendel® 928TL Track Mount Framing Projector LED



LIGHT CONTROL ACCESSORIES



SH
FIELD CUTTABLE
CURVED ETCH
SHUTTER



LM
LIGHT MASK KIT
FOR MASKING GENERAL FORM
OF NON-RECTILINEAR OBJECTS
FADE IN BORDER REQUIRED



SC
SCISSORS



UV
ULTRAVIOLET
BLOCKING
LENS



1F
100 KELVIN
WARMING FILTER

PATENT 6,612,076B2, ADDITIONAL PATENTS PENDING

HOW TO SPECIFY

To specify, please visit www.wendelighting.com/art-light-worksheets/ complete the appropriate Art Lighting Worksheet and forward the completed worksheet to our staff members at info@wendelighting.com.



The name Wendelighting is a registered trademark to Jacksen International Ltd., Monrovia, California. The name encompasses Wendel® and Wenlux® as well as other types of Wendel/Wenlux lighting fixtures for both interior and exterior use.

DIVISION OF JACKSEN INTERNATIONAL LTD

WENDELIGHTING®

Copyright © 2024 Jacksen International. Ltd. All rights reserved