

WENDELIGHTING®

DIVISION OF JACKSEN INTERNATIONAL LTD

Wendel® 928ML
Monopoint Optical Projector
LED

The Wendel® 928ML is a Surface framing Projector with a Monopoint mounting system. A white high color rendering LED light was discriminately selected to enhance art. A shaped light mask framed to art accentuates focus. Precision ground lenses focus upon independently locking light masking shutters for a securely shaped Focused Light Border “FB” (standard). For our proprietary Fade In® Light Border specify “FI.”

The LM2 (2 wire) and LM4 (4 wire) Lighting Modules are inseparable. The LM Lighting Modules include the driver, LED Chip, proprietary optics and cooling system. Lighting Modules accept the Projector (Adapter Cone) to which variable beam spread Objective Lens Focus Tubes are positioned within to highlight subject of many sizes and distances.

928ML provides rotational adjustment using lockable fastening systems. A dual heat sink technology provides optimum LED cooling. A 4” square deep junction box is provided to house the LED Driver hidden above ceiling. The separable J-Box includes an adjustable mud ring and accommodates a ceiling thickness from 5/8” to 1-1/4”.

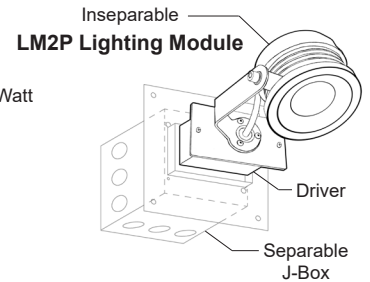
Patent 9458991 B2

Wendelighting reserves the right to make changes without notice.



LM2P LIGHTING MODULE SPECIFICATIONS (CA T24-JA8)

- Power:** 120/277 VAC Input - 20 Watts
- J-Box:** Deep Junction Box on Mounting Platform with Adjustable Mud Ring Included
- Driver/LED:** **LM2P** with **2790** Chip and Primary Optics JA8 Tested - 1300 Lumens @ 500mA (for tested life) - 67 Lumens/Watt (Estimated 1200 Lumens @ 450mA) JA8 Allowance on all LED Chip Options
- Optics:** Proprietary
- Luminaire:** Aluminum
- Dimmer:** 2 Wire Forward / Reverse Phase
- Mounting:** Ceiling - Wall
- Listings:** - UL / CUL - Damp Location - Dead End or Daisy Chain Feed Through Class 1 Wiring Only (No Additional Conductors)
- California Title 24 Residential Lighting JA8 Recessed Tested Listing (See wendelighting.com/resources)



MONOPOINT OPTICAL FRAMING PROJECTOR OPTIONS

| 928 | - ML | - LM | - | - | - | - | - |
|----------------------------------|---|---|---|---|---|---|---|
| Adapter Cone: | Monopoint Canopy Shape: | Lighting Module: (By Driver Type) | LED Chip Options (Chip Values @ 450mA:) | Objective Lens Focus Tube (Beam Spread): | Light Border: | Fixture Color: | Light Control Accessories: |
| Optical Framing Projector | <p>RD Round</p> <p>SQ Special Order Square</p> <p>RC Special Order Rectangular</p> | <p>LM2P (Standard) Philips Xitanium 2 Wire Driver Hybrid Forward / Reverse Phase Dimmable 2% With ELV Dimming 120-277V In 450mA Out Listed with CA Title 24 JA8</p> <p>LM4D eldoLED SOLOdrive 4 Wire Driver Digitally Addressable Dimming Control Dali-2® Dimmable 0.1% 120V-277V In 450mA Out Listed with CA Title 24 JA8</p> <p>LM4L Lutron EcoSystem® PEQ01 4 Wire Driver Listed with CA Title 24 JA8</p> <p style="text-align: center;">Contact Wendel for Availability of Lutron® Driver</p> | <p>2798 2700K 98 CRI 1400 Lumens R9 93</p> <p>3098 (Standard Chip) 3000K 98 CRI 1500 Lumens R9 88</p> <p>2790 (Special Order) 2700K 90 CRI 1600 Lumens R9 54</p> <p>3090 (Special Order) 3000K 90 CRI 1700 Lumens R9 60</p> | <p>12°</p> <p>25°</p> <p>45°</p> <p>60°</p> <p>90°</p> | <p>FB (Standard) Focused Light Border</p> <p>FI Fade in® Light Border</p> | <p>BLK Black</p> <p>WHT White</p> | <p>SH Extra Shutter (1)</p> <p>MK Light Mask Kit (Fade In Required)</p> <p>SC Scissors</p> <p>UV Ultraviolet Blocking Lens</p> <p>1F 100 Kelvin Warming Filter 39mm Diameter</p> |

Color Filter Options: Additional 39mm Diameter Dichroic Color Filters Available Through Rosco

Philips and Xitanium are Trademarks of Signify

Lutron and EcoSystem are Trademarks of Lutron Electronics Co., Inc.

Dali-2® is a Registered Trademark of the Digital Illumination Interface Alliance

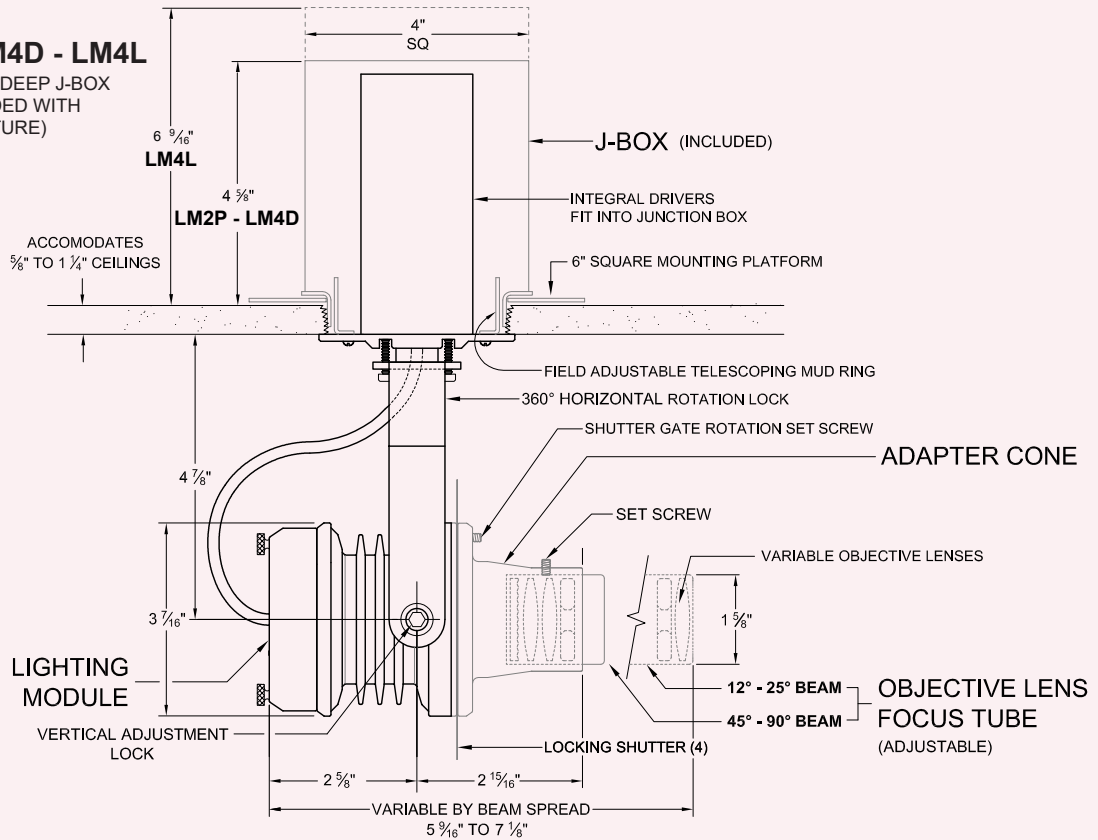
WENDELIGHTING / DIVISION OF JACKSEN INTERNATIONAL LTD. - P.O. BOX 337 - 363 BELL STREET - LOS ALAMOS, CALIFORNIA 93440
(800) 528-0101 Fax (626) 303-0046 www.wendelighting.com e-mail: info@wendelighting.com

Copyright © 2024 Jacksen International. Ltd. All rights reserved

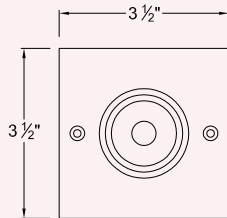
Wendel® 928ML Monopoint Optical Projector LED

ATTIC AND BUILDING ENVELOPE INSTALLATION
 MINIMUM R38 INSULATION SURROUNDING AND COVERING RECESSED J-BOX REQUIRED FOR ASSEMBLY LIFE

LM2P - LM4D - LM4L
 REQUIRES DEEP J-BOX
 (INCLUDED WITH
 FIXTURE)

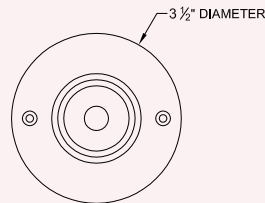


SPECIFY CANOPY SHAPE



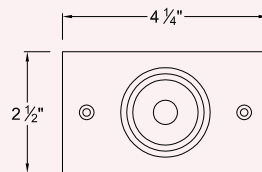
SQ
SQUARE

SPECIAL ORDER
 FITS 3" DIAMETER MUD RING
 OVER DEEP J-BOX



RD
ROUND

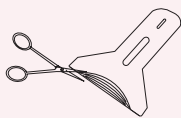
FITS 3" DIAMETER MUD RING
 OVER DEEP J-BOX



RC
RECTANGULAR

SPECIAL ORDER
 FITS 2-1/4" x 3-3/4" SINGLE DEVICE
 MUD RING OVER DEEP J-BOX

LIGHT CONTROL ACCESSORIES



SH
 FIELD CUTTABLE
 CURVED ETCH
 SHUTTER



LM
 LIGHT MASK KIT
 FOR MASKING GENERAL FORM
 OF NON-RECTILINEAR OBJECTS
 FADE IN BORDER REQUIRED



SC
 SCISSORS



UV
 ULTRAVIOLET
 BLOCKING
 LENS



1F
 100 KELVIN
 WARMING FILTER

PATENT 6,612,0761B2, ADDITIONAL PATENTS PENDING

HOW TO SPECIFY

To specify, please visit www.wendelighting.com/art-light-worksheets/ complete the appropriate Art Lighting Worksheet and forward the completed worksheet to our staff members at info@wendelighting.com.



The name Wendelighting is a registered trademark to Jacksen International Ltd., Monrovia, California. The name encompasses Wendel® and Wenlux® as well as other types of Wendel/Wenlux lighting fixtures for both interior and exterior use.

WENDELIGHTING®

DIVISION OF JACKSEN INTERNATIONAL LTD

Copyright © 2024 Jacksen International. Ltd. All rights reserved