

WENDELIGHTING®

DIVISION OF JACKSEN INTERNATIONAL LTD

Model 2346P
Recessed Optical Projector

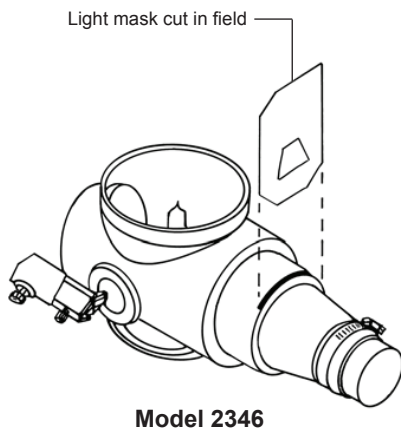
Wendelighting optical projectors offer the architect, lighting engineer and interior designer the ultimate in controlled illumination for interior settings.

For use with Top or End Access Housings, the Wendel® projector combines an optical system of precision ground lenses, reflector, and a unique light masking technique. In addition to three condensing lenses, the projectors are factory assembled with a custom combination of objective lenses to meet the beam spread requirement. The result is a highly intensified light that is artistically confined to the exact area of interest regardless of shape.

Typical applications include: large paintings, sculpture, antiques, religious articles, trophies, furniture and various other architectural focal points. Frequently one projector is used to provide separate light maskings for multiple objects.

Consultations

Jacksen International Ltd. manufactures and offers optional installation for the equipment described in this bulletin. In addition, staff members are available for consultation. For further information, please write or call.



SPECIFICATIONS

Applications:	Large focal points, paintings, sculpture, corporate logos, gobo patterns, and tables
Power:	120 VAC
Lamp:	Specify Quartz 250 or 400 Watt Q/CL mini-can screw base 2,000 hr. life
Weight:	9 lbs.
Objective Lenses:	Preset by Factory
Condensing Lens:	3
Spherical Reflector:	1
Construction:	Cast Aluminum
Relamping:	Does not change focus
Listings:	
250 Watt Listing	UL / CUL - Damp Location - Non IC - Not Air Tight
400 Watt Listing	UL / CUL - Damp Location - Non IC - Not Air Tight
Accessory:	FADE IN® Optics for a Loosely Conforming Border

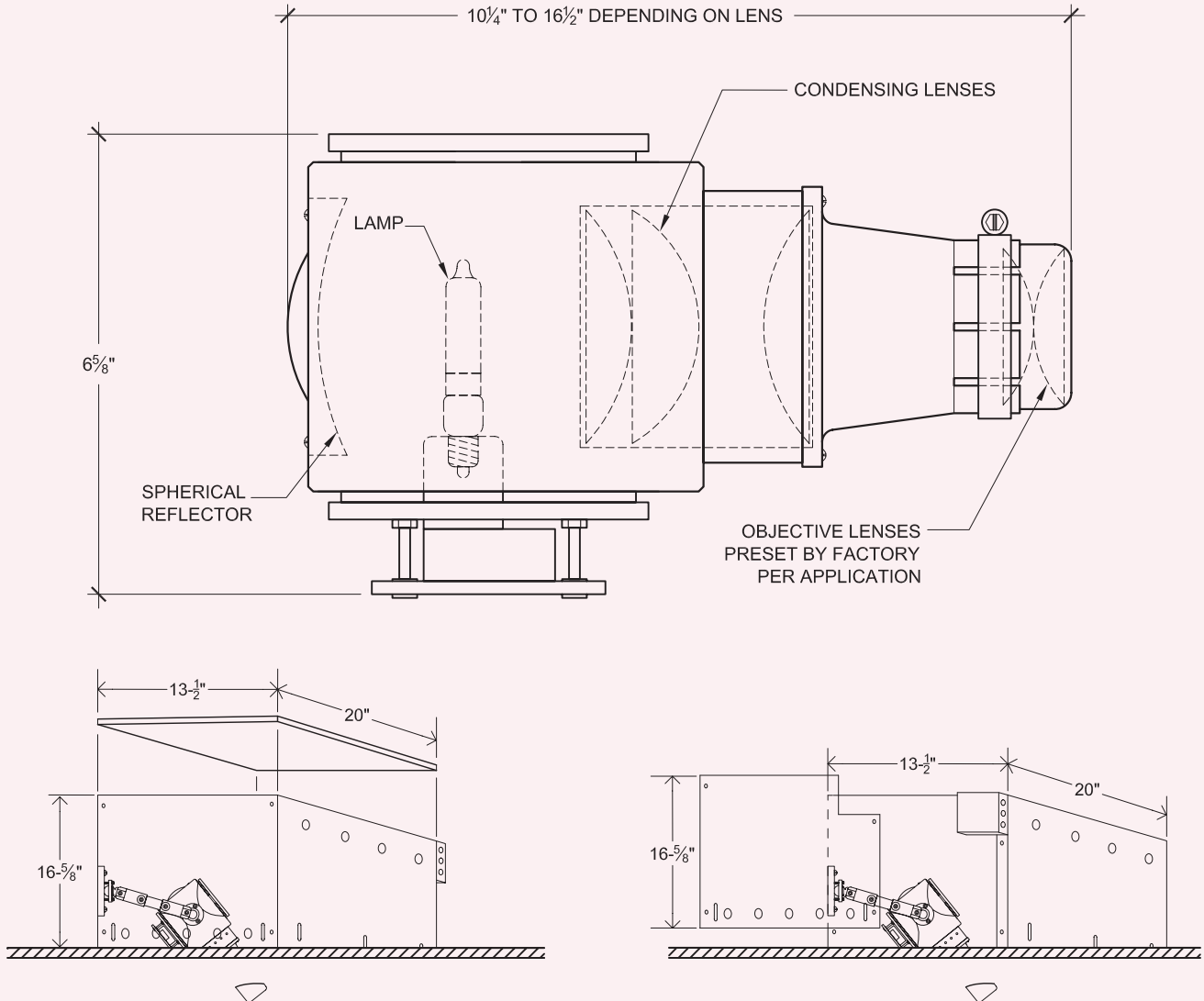
DIAMETER OF SPOT AND FOOT CANDLES DATA (400 WATT)

Distance to Object	1'		2'		3'		4'		5'		6'		7'		8'		9'		10'		15'		25'		Spread
	Size of Spot	Foot Cand.	Size of Spot	Foot Cand.	Size of Spot	Foot Cand.	Size of Spot	Foot Cand.	Size of Spot	Foot Cand.	Size of Spot	Foot Cand.	Size of Spot	Foot Cand.	Size of Spot	Foot Cand.	Size of Spot	Foot Cand.	Size of Spot	Foot Cand.	Size of Spot	Foot Cand.	Size of Spot	Foot Cand.	Spread of Beam
Objective Lens FL																									
230	3"	5500	6"	1400	9"	650	12"	350	15"	240	18"	160	21"	120	24"	90	27"	72	30"	58	45"	26	75"	10	12"
192	4"	4500	8"	1100	12"	500	16"	280	20"	180	24"	125	28"	90	32"	70	36"	50	40"	45	60"	20	100"	7	18"
96	8"	2200	16"	550	24"	250	32"	140	40"	90	48"	60	56"	45	64"	35	72"	28	80"	22	120"	10	200"	-	45"
48	12"	630	24"	160	36"	70	48"	40	60"	25	72"	15	84"	12	96"	10	108"	8	120"	6	180"	-	300"	-	96"

Notes: - Additional diameter of spots are available.
- Wendelighting reserves the right to make changes without notice.

Model 2346P

DIMENSIONS



TOP ACCESS HOUSING (SOLD SEPARATELY)
SEE 2346H2 OR 2346H4 SPECIFICATION SHEETS

END ACCESS HOUSING (SOLD SEPARATELY)
SEE 2346UH SPECIFICATION SHEETS

HOW TO SPECIFY

To specify, please visit www.wendelighting.com/worksheets.htm, complete the appropriate projector worksheet and forward the completed worksheet to our staff members, info@wendelighting.com.

The name Wendelighting is registered to Jacksen International Ltd., Monrovia, California. The name encompasses Wendel[®] and Wenlux[®] optical projectors as well as other types of Wendel/Wenlux lighting fixtures for both interior and exterior use.



WENDELIGHTING[®]

DIVISION OF JACKSEN INTERNATIONAL LTD