

WENDELIGHTING®

DIVISION OF JACKSEN INTERNATIONAL LTD

Wenlux® Model 928B
Beam Mount
Optical Projector

Wendelighting's Wenlux® Model 928B Beam Mount Projector provides the designer with a surface mounted optical light shaping system that delivers a loosely conforming, soft-border illumination for fine art and furniture that can be installed and adjusted with ease.

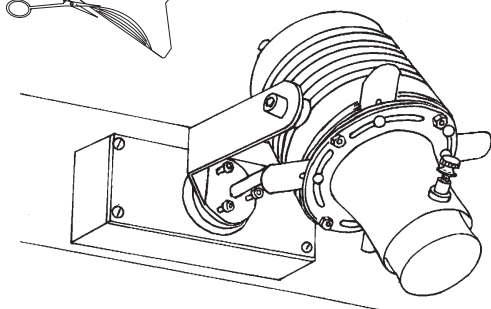
The Wenlux projector combines an optical system of precision ground lenses and independent locking light mask shutters for a secure, field cuttable, exacting Sharp Focus Light Border. For a Soft Focus Border, Wendel's® optional Fade In® technology utilizes a diffusion system to easily create a four sided, loosely conforming light, shaped to the area of interest. Variable optics change light spread to highlight subjects of many sizes and distances.

The Wenlux projector incorporates a bright energy-efficient light source, a convection cooling system and a sturdy fastening design that keeps it securely positioned to ensure optimal performance. The back box can be fastened to the side of an exposed beam or directly to a wood or concrete ceiling and includes an integral transformer. For a back box without a transformer, specify remote transformers "RT." Both back boxes accept single dead end Class 1 wiring.

Patent 9458991 B2 - Additional Patents Pending
Wendelighting reserves the right to make changes without notice.



Field Cuttable
Curved Etch
Shutters



Model 928B

STANDARD SPECIFICATIONS

Applications:	Paintings, Sculptures, and Furnishings
Power:	120 VAC
Transformer:	Electronic Low Voltage 120 VAC Input - 11.5 VAC Output
Lamp:	Philips 45 MRC16/IRC/FL36 or /NFL24
Shutters:	Excess Field Cut
Objective Lenses:	Three 76 FL Lenses
Housing:	Aluminum and Stainless
Specify Color:	Nat Aluminum (AL) AL/Black, AL/White
Mounting:	Beam, Ceiling, or Wall Mount
Relamping:	Does Not Change Focus
Weight:	3 lbs.
Dimmer:	Electronic Low Voltage Dimmer Required
Listing:	UL / CUL - Damp Location - No Feed Through
Accessories:	- Light Mask Plate Gate for Non-Rectilinear Object - Narrow Beam Objective Cone for One 76 FL Lens - Remote Transformer Power Supplies - Standard MR16 1.9" Dia. UV or Color Filter by Others - Fade In® Lens

Certification

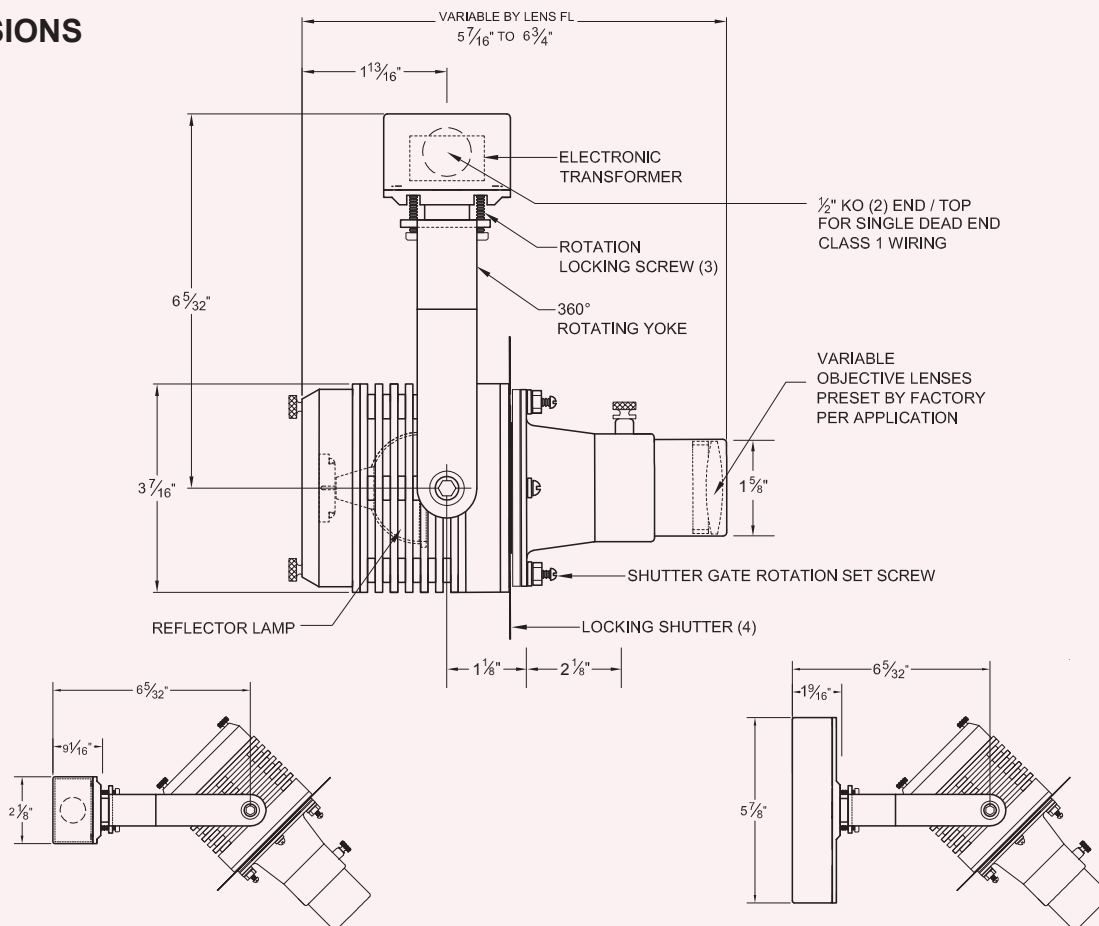
CA Title 24 JA8-2016 Residential Lighting Compliant using
Sora® MR16 LED Lamp # SM16-09-25D-930-03 by others,
will not deliver foot candle levels shown.

DIAMETER OF SPOT AND FOOT CANDLES DATA (45MR16 IR)

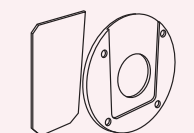
Distance to Object		1'		2'		3'		4'		5'		6'		7'		8'		9'		10'		Spread
Application	76 FL Objective Lens Quantity	Size of Spot	Foot Cand.	Size of Spot	Foot Cand.	Size of Spot	Foot Cand.	Size of Spot	Foot Cand.	Size of Spot	Foot Cand.	Size of Spot	Foot Cand.	Size of Spot	Foot Cand.	Size of Spot	Foot Cand.	Size of Spot	Foot Cand.	Size of Spot	Foot Cand.	Near Uniform Area
Narrow Beam	1	3"	2300	6"	730	9"	360	13"	205	16"	130	19"	90	22"	65	26"	50	29"	38	32"	33	16"
Medium Beam	2	7"	1500	15"	490	22"	220	30"	125	38"	73	45"	53	53"	37	61"	29	69"	21	76"	19	36"
Wide Beam	3	9"	630	19"	260	30"	105	40"	58	50"	37	60"	24	70"	19	80"	15	90"	12	100"	10	46"
Very Wide Beam	4	13"	60	27"	195	41"	73	54"	43	69"	26	82"	18	95"	14	109"	11	123"	9	137"	7	60"

Model 928B

DIMENSIONS



ACCESSORIES



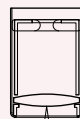
LM
LIGHT MASK
PLATE GATE KIT
FOR NON-RECTILINEAR
OBJECTS



SCR
SCISSORS



76 FL
ADDITIONAL
76FL LENS
FOR 60°



NB16
NARROW BEAM
OBJECTIVE CONE
ASSEMBLY FOR
15°



FI
FADE IN®
SOFTENTING
LENS



UV
ULTRAVIOLET
BLOCKING
LENS

PATENT 6,612,076B2, ADDITIONAL PATENTS PENDING

REMOTE TRANSFORMER POWER SUPPLIES

PS60 - 120V Input / 11.7V Output

Electronic Low Voltage Power Supply
For One Beam Mount Luminaire
6 1/2" L x 1 11/16" W x 1 7/16" D
(Note: 6' Max Wire Length)

PS300 - 120V Input / 12V Output

Magnetic Low Voltage Power Supply
For Five Beam Mount Luminaire / Dead End Feeds
6 3/4" L x 5" W x 4 3/4" D

HOW TO SPECIFY

To specify, please visit www.wendelighting.com/worksheets.htm, complete the appropriate projector worksheet and forward the completed worksheet to our staff members, info@wendelighting.com.

The name Wendelighting is registered to Jacksen International Ltd., Monrovia, California. The name encompasses Wendel® and Wenlux® optical projectors as well as other types of Wendel/Wenlux lighting fixtures for both interior and exterior use.



WENDELIGHTING®

DIVISION OF JACKSEN INTERNATIONAL LTD